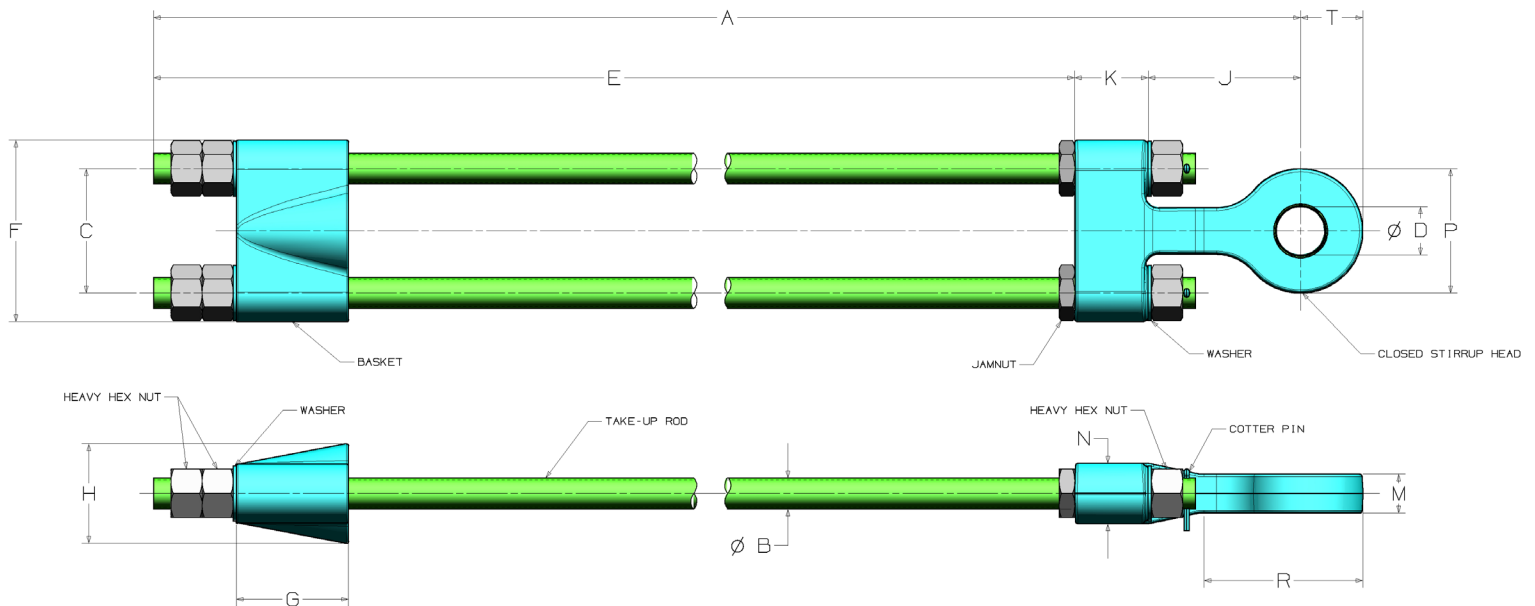


## Closed Standard Take-Up Assemblies

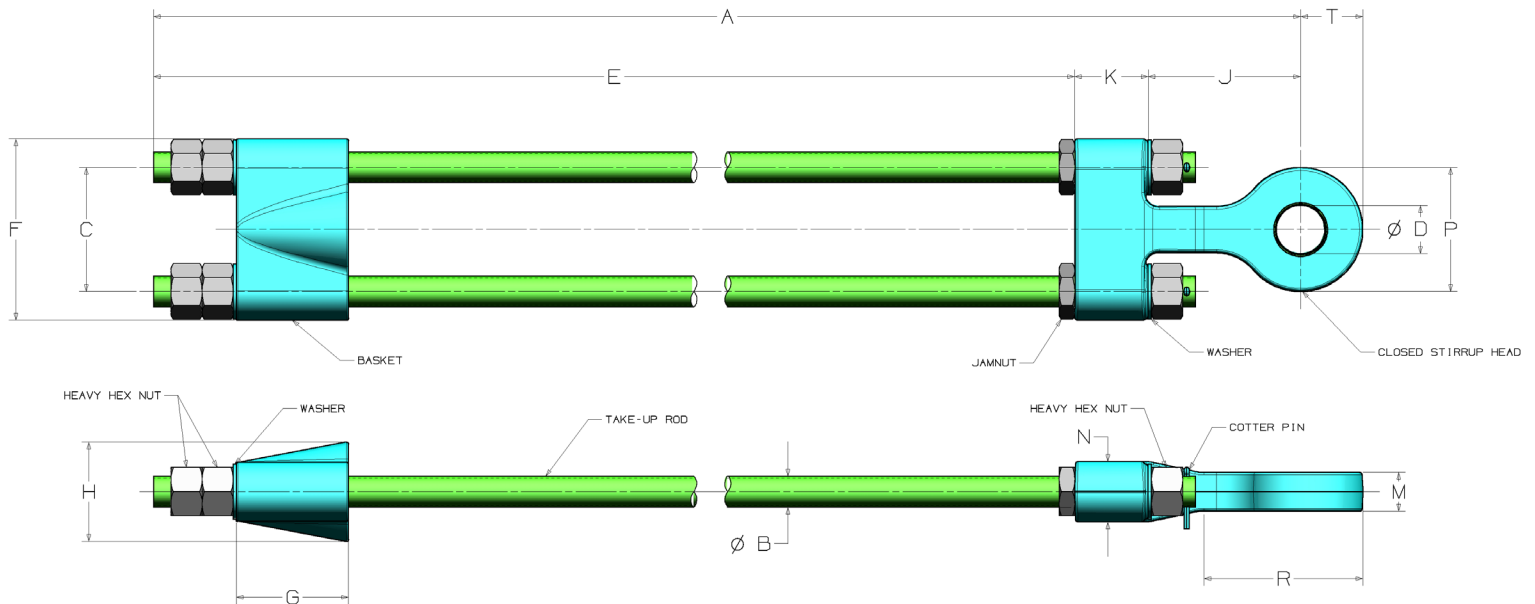
ASSEMBLY PMID	STRAND DIA.	TOTAL WT. (LBS)	A	DIA. B	C	DIA. D	E	F	G	H	J	K	M	N	P	R	T
L-9131-09T	0.56-0.63	20	21.5	0.75	4.38	1.44	15.4	5.88	3.81	2.50	4.00	2.13	1.13	1.56	3.25	4.50	1.63
L-9132-09T	0.69-0.75	36	23.8	1.00	4.56	1.69	16.8	6.56	4.44	3.30	4.59	2.47	1.44	2.25	3.63	5.00	1.82
L-9133-09T	0.81-0.88	52	25.4	1.13	5.19	2.06	17.1	7.31	5.06	3.76	5.28	2.97	1.56	2.69	4.38	6.00	2.19
L-9134-09T	0.94-1.00	78	28.5	1.25	5.75	2.31	18.6	8.18	5.81	4.13	6.60	3.44	1.69	2.50	5.25	6.62	2.63
L-9135-12T	1.06-1.13	94	32.9	1.38	6.00	2.56	21.4	8.62	6.00	4.50	8.00	3.44	1.81	2.56	5.75	7.50	2.88
L-9136-12T	1.19-1.25	138	34.7	1.63	6.75	2.81	21.3	9.75	6.38	4.88	9.13	4.25	2.06	3.00	6.38	9.00	3.19
L-9137-12T	1.31-1.38	183	37.7	1.75	7.19	3.06	22.7	10.38	6.94	5.38	10.25	4.69	2.38	3.25	7.00	10.00	3.50
L-9138-15T	1.44-1.50	253	41.8	2.00	8.13	3.56	25.9	11.88	7.31	6.50	10.88	5.06	2.56	3.50	8.00	11.00	4.00
L-9139-15T	1.56-1.75	357	43.6	2.25	9.00	3.81	27.2	13.12	8.12	7.20	11.00	5.38	2.81	4.38	9.00	11.50	4.50
L-9140-18T	1.81-2.00	525	49.7	2.50	10.25	4.56	31.0	14.63	8.25	8.00	12.25	6.50	3.06	4.50	10.38	12.50	5.19
L-9141-18T	2.06-2.25	688	53.0	2.75	11.50	4.81	34.2	16.44	10.88	9.00	11.75	7.00	3.31	5.13	12.25	13.25	6.13
L-9142-18T	2.31-2.38	837	56.2	3.00	12.69	5.06	35.5	18.00	11.81	9.75	13.38	7.25	3.69	5.50	12.50	14.96	6.25
L-9143-21T	2.44-2.63	1092	61.8	3.25	13.38	5.81	39.8	19.25	12.81	10.50	14.25	7.75	4.00	6.88	13.50	17.31	7.75
L-9144-21T	2.69-2.75	1299	65.3	3.50	14.06	5.81	41.7	21.13	13.38	11.38	16.00	7.63	4.19	6.69	14.50	19.25	8.00
L-9145-21T	2.88-3.00	1746	74.7	3.75	15.25	6.81	44.7	22.00	15.50	12.25	21.62	8.38	4.50	7.00	16.00	20.25	9.25



**IMPORTANT:** The dimensions shown are for reference only and are subject to change. Please contact your ESCO representative for additional information and pricing.

## Closed 24 Take-Up Assemblies

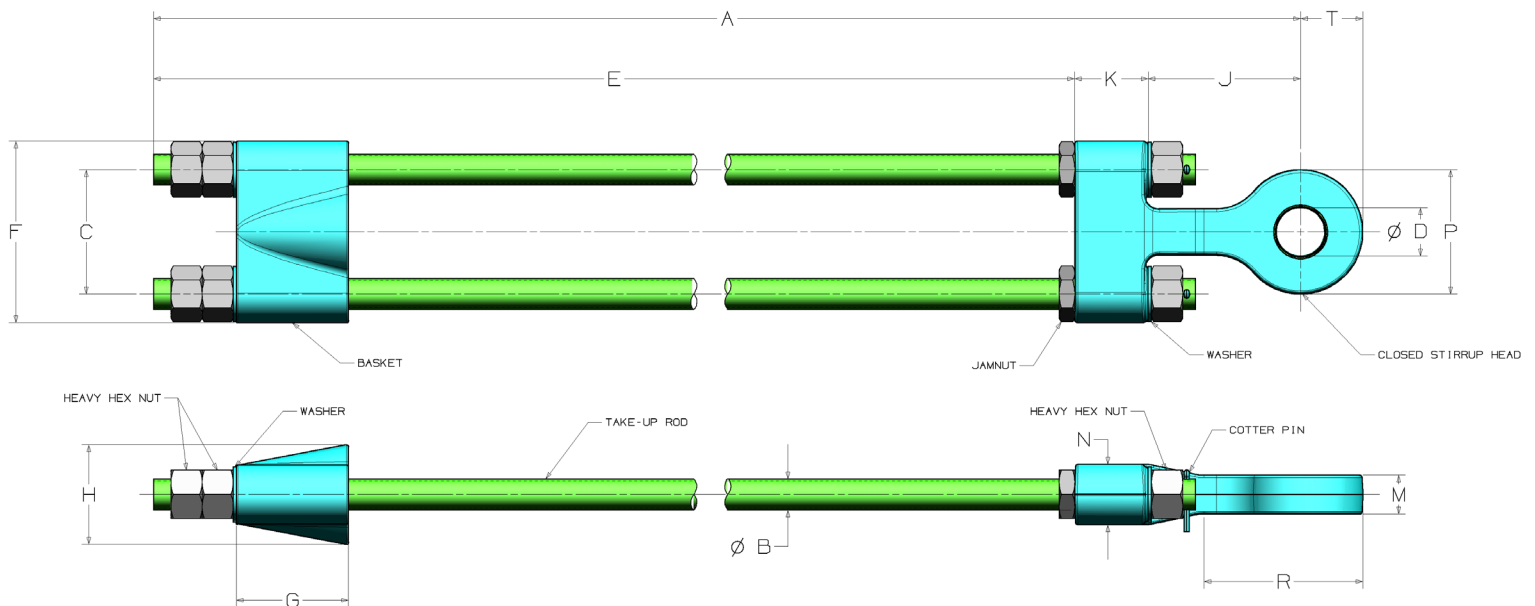
ASSEMBLY PMID	STRAND DIA.	TOTAL WT. (LBS)	A	DIA. B	C	DIA. D	E	F	G	H	J	K	M	N	P	R	T
L-9131-24T	0.56-0.63	24	37.5	0.75	4.38	1.44	31.4	5.88	3.81	2.50	4.00	2.13	1.13	1.56	3.25	4.50	1.63
L-9132-24T	0.69-0.75	43	39.8	1.00	4.56	1.69	32.8	6.56	4.44	3.30	4.59	2.47	1.44	2.25	3.63	5.00	1.82
L-9133-24T	0.81-0.88	61	42.4	1.13	5.19	2.06	34.1	7.31	5.06	3.76	5.28	2.97	1.56	2.69	4.38	6.00	2.19
L-9134-24T	0.94-1.00	86	44.6	1.25	5.75	2.31	34.6	8.18	5.81	4.13	6.60	3.44	1.69	2.50	5.25	6.62	2.63
L-9135-24T	1.06-1.13	104	46.9	1.38	6.00	2.56	35.4	8.62	6.00	4.50	8.00	3.44	1.81	2.56	5.75	7.50	2.88
L-9136-24T	1.19-1.25	149	48.7	1.63	6.75	2.81	35.3	9.75	6.38	4.88	9.13	4.25	2.06	3.00	6.38	9.00	3.19
L-9137-24T	1.31-1.38	197	52.7	1.75	7.19	3.06	37.7	10.38	6.94	5.38	10.25	4.69	2.38	3.25	7.00	10.00	3.50
L-9138-24T	1.44-1.50	267	54.8	2.00	8.13	3.56	38.9	11.88	7.31	6.50	10.88	5.06	2.56	3.50	8.00	11.00	4.00
L-9139-24T	1.56-1.75	375	56.6	2.25	9.00	3.81	40.2	13.12	8.12	7.20	11.00	5.38	2.81	4.38	9.00	11.50	4.50
L-9140-24T	1.81-2.00	539	60.7	2.50	10.25	4.56	42.0	14.63	8.25	8.00	12.25	6.50	3.06	4.50	10.38	12.50	5.19
L-9141-24T	2.06-2.25	706	63.0	2.75	11.50	4.81	44.2	16.44	10.88	9.00	11.75	7.00	3.31	5.13	12.25	13.25	6.13
L-9142-24T	2.31-2.38	858	66.2	3.00	12.69	5.06	45.5	18.00	11.81	9.75	13.38	7.25	3.69	5.50	12.50	14.96	6.25
L-9143-24T	2.44-2.63	1104	68.8	3.25	13.38	5.81	46.8	19.25	12.81	10.50	14.25	7.75	4.00	6.88	13.50	17.31	7.75
L-9144-24T	2.69-2.75	1316	72.3	3.50	14.06	5.81	48.7	21.13	13.38	11.38	16.00	7.63	4.19	6.69	14.50	19.25	8.00
L-9145-24T	2.88-3.00	1762	81.7	3.75	15.25	6.81	51.7	22.00	15.50	12.25	21.62	8.38	4.50	7.00	16.00	20.25	9.25
L-9146-24T	3.13-3.25	2178	84.4	4.00	17.25	7.06	53.1	24.50	17.13	13.00	22.63	8.75	4.75	8.25	18.00	24.00	11.00
L-9147-24T	3.38-3.50	2665	90.2	4.25	18.31	7.31	57.2	36.06	19.31	13.88	23.62	9.38	5.00	8.39	18.00	25.00	11.00
L-9148-24T	3.63-3.75	3043	94.0	4.50	19.38	7.56	60.5	27.13	21.13	14.75	23.69	9.81	5.25	9.38	19.00	25.25	11.63
L-9149-24T	3.88-4.00	3699	97.9	4.75	20.44	7.81	61.9	29.44	22.94	15.72	25.81	10.19	5.50	9.75	20.00	26.50	12.25



**IMPORTANT:** The dimensions shown are for reference only and are subject to change. Please contact your ESCO representative for additional information and pricing.

## Closed 36 Take-Up Assemblies

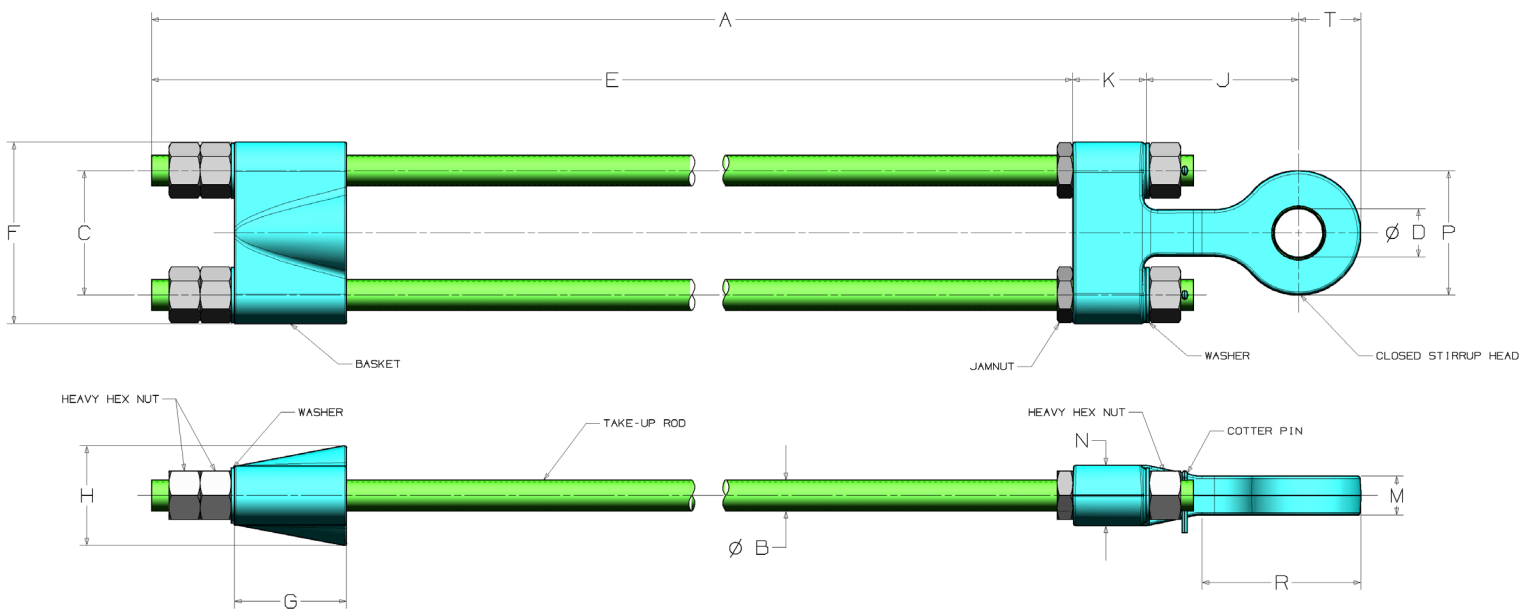
ASSEMBLY PMID	STRAND DIA.	TOTAL WT. (LBS)	A	DIA. B	C	DIA. D	E	F	G	H	J	K	M	N	P	R	T
L-9131-36T	0.56-0.63	26	49.5	0.75	4.38	1.44	43.4	5.88	3.81	2.50	4.00	2.13	1.13	1.56	3.25	4.50	1.63
L-9132-36T	0.69-0.75	49	53.8	1.00	4.56	1.69	46.8	6.56	4.44	3.30	4.59	2.47	1.44	2.25	3.63	5.00	1.82
L-9133-36T	0.81-0.88	67	56.4	1.13	5.19	2.06	48.1	7.31	5.06	3.76	5.28	2.97	1.56	2.69	4.38	6.00	2.19
L-9134-36T	0.94-1.00	94	57.6	1.25	5.75	2.31	47.6	8.18	5.81	4.13	6.60	3.44	1.69	2.50	5.25	6.62	2.63
L-9135-36T	1.06-1.13	112	59.9	1.38	6.00	2.56	48.4	8.62	6.00	4.50	8.00	3.44	1.81	2.56	5.75	7.50	2.88
L-9136-36T	1.19-1.25	159	62.7	1.63	6.75	2.81	49.3	9.75	6.38	4.88	9.13	4.25	2.06	3.00	6.38	9.00	3.19
L-9137-36T	1.31-1.38	211	65.7	1.75	7.19	3.06	50.7	10.38	6.94	5.38	10.25	4.69	2.38	3.25	7.00	10.00	3.50
L-9138-36T	1.44-1.50	285	67.8	2.00	8.13	3.56	51.9	11.88	7.31	6.50	10.88	5.06	2.56	3.50	8.00	11.00	4.00
L-9139-36T	1.56-1.75	397	69.6	2.25	9.00	3.81	53.2	13.12	8.12	7.20	11.00	5.38	2.81	4.38	9.00	11.50	4.50
L-9140-36T	1.81-2.00	569	74.7	2.50	10.25	4.56	56.0	14.63	8.25	8.00	12.25	6.50	3.06	4.50	10.38	12.50	5.19
L-9141-36T	2.06-2.25	742	76.0	2.75	11.50	4.81	57.2	16.44	10.88	9.00	11.75	7.00	3.31	5.13	12.25	13.25	6.13
L-9142-36T	2.31-2.38	902	80.2	3.00	12.69	5.06	59.5	18.00	11.81	9.75	13.38	7.25	3.69	5.50	12.50	14.96	6.25
L-9143-36T	2.44-2.63	1154	82.8	3.25	13.38	5.81	60.8	19.25	12.81	10.50	14.25	7.75	4.00	6.88	13.50	17.31	7.75
L-9144-36T	2.69-2.75	1374	88.3	3.50	14.06	5.81	64.7	21.13	13.38	11.38	16.00	7.63	4.19	6.69	14.50	19.25	8.00
L-9145-36T	2.88-3.00	1834	95.7	3.75	15.25	6.81	65.7	22.00	15.50	12.25	21.62	8.38	4.50	7.00	16.00	20.25	9.25
L-9146-36T	3.13-3.25	2259	101.4	4.00	17.25	7.06	70.1	24.50	17.13	13.00	22.63	8.75	4.75	8.25	18.00	24.00	11.00
L-9147-36T	3.38-3.50	2756	106.2	4.25	18.31	7.31	73.2	36.06	19.31	13.88	23.62	9.38	5.00	8.39	18.00	25.00	11.00
L-9148-36T	3.63-3.75	3153	108.0	4.50	19.38	7.56	74.5	27.13	21.13	14.75	23.69	9.81	5.25	9.38	19.00	25.25	11.63
L-9149-36T	3.88-4.00	3809	112.9	4.75	20.44	7.81	76.9	29.44	22.94	15.72	25.81	10.19	5.50	9.75	20.00	26.50	12.25



**IMPORTANT:** The dimensions shown are for reference only and are subject to change. Please contact your ESCO representative for additional information and pricing.

## Closed 48 Take-Up Assemblies

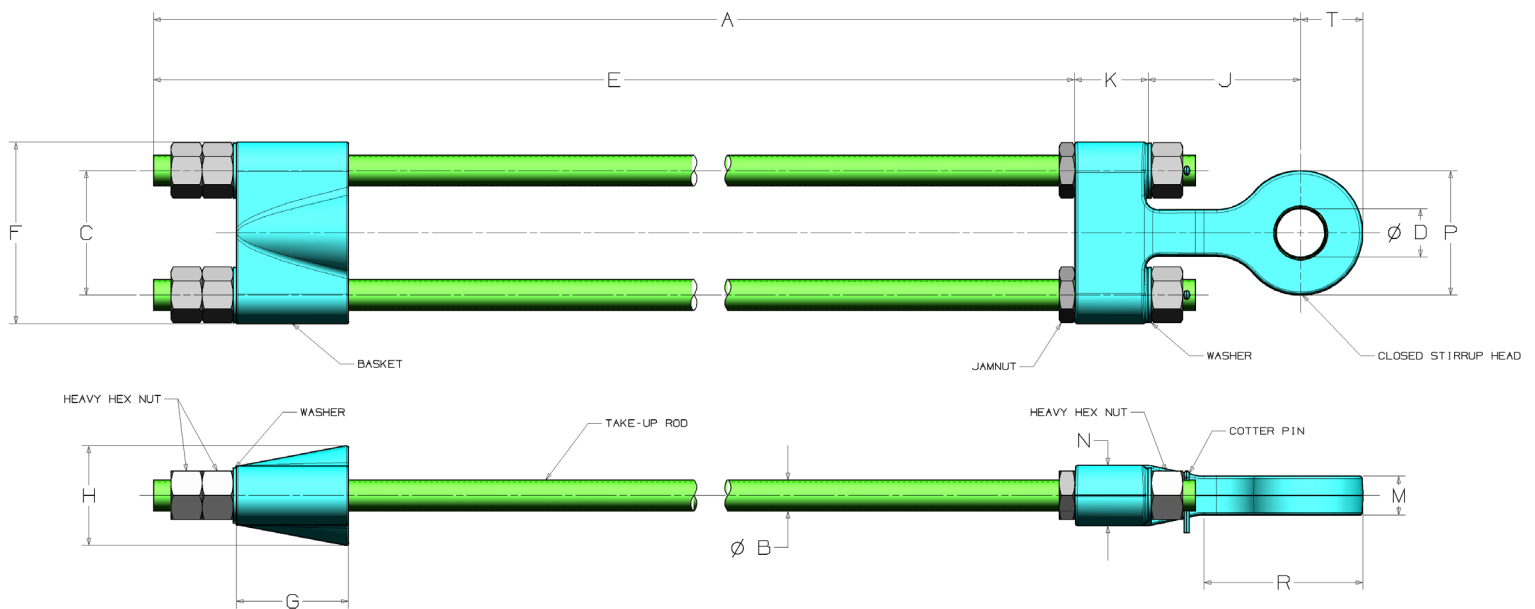
ASSEMBLY PMID	STRAND DIA.	TOTAL WT. (LBS)	A	DIA. B	C	DIA. D	E	F	G	H	J	K	M	N	P	R	T
L-9131-48T	0.56-0.63	28	61.5	0.75	4.38	1.44	55.4	5.88	3.81	2.50	4.00	2.13	1.13	1.56	3.25	4.50	1.63
L-9132-48T	0.69-0.75	53	63.8	1.00	4.56	1.69	56.8	6.56	4.44	3.30	4.59	2.47	1.44	2.25	3.63	5.00	1.82
L-9133-48T	0.81-0.88	72	66.4	1.13	5.19	2.06	58.1	7.31	5.06	3.76	5.28	2.97	1.56	2.69	4.38	6.00	2.19
L-9134-48T	0.94-1.00	100	69.6	1.25	5.75	2.31	59.6	8.18	5.81	4.13	6.60	3.44	1.69	2.50	5.25	6.62	2.63
L-9135-48T	1.06-1.13	122	70.9	1.38	6.00	2.56	59.4	8.62	6.00	4.50	8.00	3.44	1.81	2.56	5.75	7.50	2.88
L-9136-48T	1.19-1.25	170	72.7	1.63	6.75	2.81	59.3	9.75	6.38	4.88	9.13	4.25	2.06	3.00	6.38	9.00	3.19
L-9137-48T	1.31-1.38	225	75.7	1.75	7.19	3.06	60.7	10.38	6.94	5.38	10.25	4.69	2.38	3.25	7.00	10.00	3.50
L-9138-48T	1.44-1.50	303	77.8	2.00	8.13	3.56	61.9	11.88	7.31	6.50	10.88	5.06	2.56	3.50	8.00	11.00	4.00
L-9139-48T	1.56-1.75	424	79.6	2.25	9.00	3.81	63.2	13.12	8.12	7.20	11.00	5.38	2.81	4.38	9.00	11.50	4.50
L-9140-48T	1.81-2.00	599	82.7	2.50	10.25	4.56	64.0	14.63	8.25	8.00	12.25	6.50	3.06	4.50	10.38	12.50	5.19
L-9141-48T	2.06-2.25	778	86.0	2.75	11.50	4.81	67.2	16.44	10.88	9.00	11.75	7.00	3.31	5.13	12.25	13.25	6.13
L-9142-48T	2.31-2.38	944	89.2	3.00	12.69	5.06	68.5	18.00	11.81	9.75	13.38	7.25	3.69	5.50	12.50	14.96	6.25
L-9143-48T	2.44-2.63	1206	92.8	3.25	13.38	5.81	70.8	19.25	12.81	10.50	14.25	7.75	4.00	6.88	13.50	17.31	7.75
L-9144-48T	2.69-2.75	1434	96.3	3.50	14.06	5.81	72.7	21.13	13.38	11.38	16.00	7.63	4.19	6.69	14.50	19.25	8.00
L-9145-48T	2.88-3.00	1904	105.7	3.75	15.25	6.81	75.7	22.00	15.50	12.25	21.62	8.38	4.50	7.00	16.00	20.25	9.25
L-9146-48T	3.13-3.25	2336	108.4	4.00	17.25	7.06	77.1	24.50	17.13	13.00	22.63	8.75	4.75	8.25	18.00	24.00	11.00
L-9147-48T	3.38-3.50	2846	114.2	4.25	18.31	7.31	81.2	36.06	19.31	13.88	23.62	9.38	5.00	8.39	18.00	25.00	11.00
L-9148-48T	3.63-3.75	3254	118.0	4.50	19.38	7.56	84.5	27.13	21.13	14.75	23.69	9.81	5.25	9.38	19.00	25.25	11.63
L-9149-48T	3.88-4.00	3917	121.9	4.75	20.44	7.81	85.9	29.44	22.94	15.72	25.81	10.19	5.50	9.75	20.00	26.50	12.25



**IMPORTANT:** The dimensions shown are for reference only and are subject to change. Please contact your ESCO representative for additional information and pricing.

## Closed 72 Take-Up Assemblies

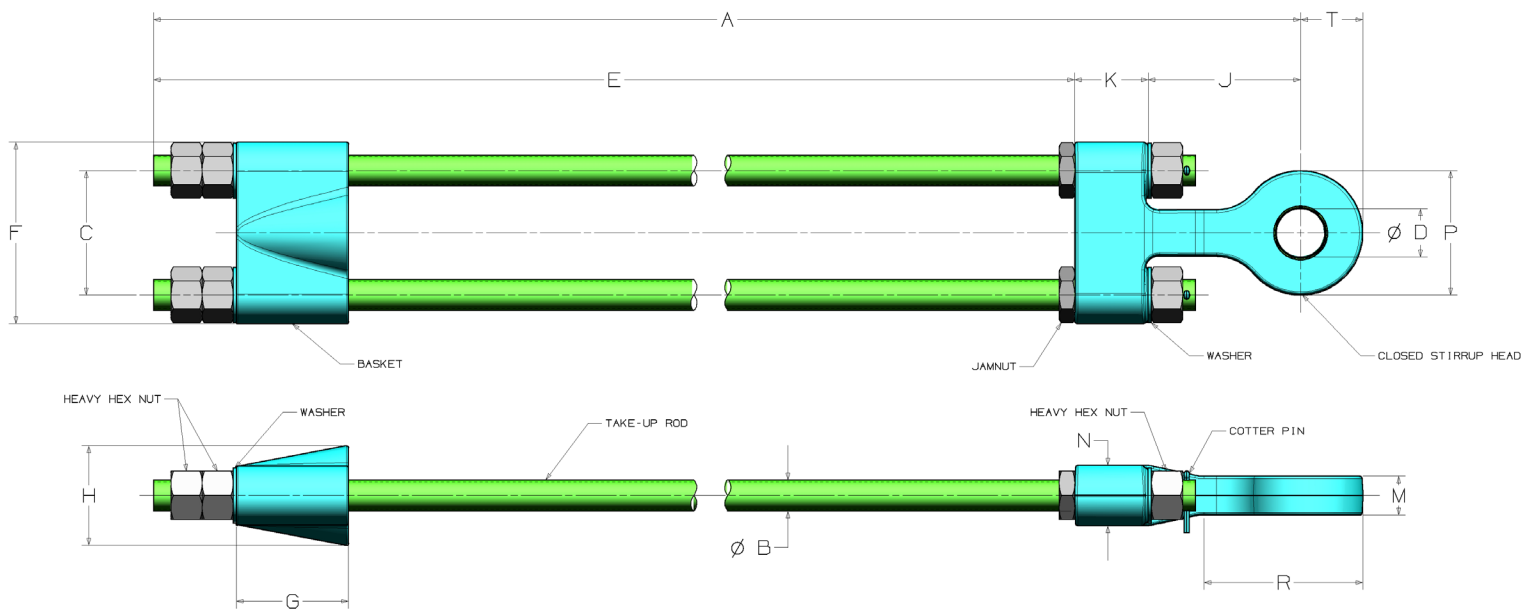
ASSEMBLY PMID	STRAND DIA.	TOTAL WT. (LBS)	A	DIA. B	C	DIA. D	E	F	G	H	J	K	M	N	P	R	T
L-9131-72T	0.56-0.63	34	85.5	0.75	4.38	1.44	79.4	5.88	3.81	2.50	4.00	2.13	1.13	1.56	3.25	4.50	1.63
L-9132-72T	0.69-0.75	61	89.8	1.00	4.56	1.69	82.8	6.56	4.44	3.30	4.59	2.47	1.44	2.25	3.63	5.00	1.82
L-9133-72T	0.81-0.88	84	92.4	1.13	5.19	2.06	84.1	7.31	5.06	3.76	5.28	2.97	1.56	2.69	4.38	6.00	2.19
L-9134-72T	0.94-1.00	115	93.6	1.25	5.75	2.31	83.6	8.18	5.81	4.13	6.60	3.44	1.69	2.50	5.25	6.62	2.63
L-9135-72T	1.06-1.13	139	95.9	1.38	6.00	2.56	84.4	8.62	6.00	4.50	8.00	3.44	1.81	2.56	5.75	7.50	2.88
L-9136-72T	1.19-1.25	193	98.7	1.63	6.75	2.81	85.3	9.75	6.38	4.88	9.13	4.25	2.06	3.00	6.38	9.00	3.19
L-9136-72TBUSH	1.19-1.25	192	98.7	1.63	6.75	2.56	85.3	9.75	6.38	4.88	9.13	4.25	2.06	3.00	6.38	9.00	3.19
L-9137-72T	1.31-1.38	255	101.7	1.75	7.19	3.06	86.7	10.38	6.94	5.38	10.25	4.69	2.38	3.25	7.00	10.00	3.50
L-9137-72TMOD	1.31-1.38	255	101.7	1.75	7.19	2.81	86.7	10.38	6.94	5.38	10.25	4.69	2.38	3.25	7.00	10.00	3.50
L-9138-72T	1.44-1.50	342	103.8	2.00	8.13	3.56	87.9	11.88	7.31	6.50	10.88	5.06	2.56	3.50	8.00	11.00	4.00
L-9139-72T	1.56-1.75	434	105.6	2.25	9.00	3.81	89.2	13.12	8.12	7.20	11.00	5.38	2.81	4.38	9.00	11.50	4.50
L-9139-72BT	1.56-1.75	443	105.6	2.25	9.00	3.56	89.2	13.12	8.12	7.20	11.00	5.38	2.81	4.38	9.00	11.50	4.50
L-9140-72T	1.81-2.00	579	110.7	2.50	10.25	4.56	92.0	14.63	8.25	8.00	12.25	6.50	3.06	4.50	10.38	12.50	5.19
L-9141-72T	2.06-2.25	764	112.0	2.75	11.50	4.81	93.2	16.44	10.88	9.00	11.75	7.00	3.31	5.13	12.25	13.25	6.13
L-9141-72BUSHT	2.06-2.25	784	112.0	2.75	11.50	4.06	93.2	16.44	10.88	9.00	11.81	6.94	3.31	5.13	12.25	13.25	6.13
L-9142-72T	2.31-2.38	1040	116.2	3.00	12.69	5.06	95.5	18.00	11.81	9.75	13.38	7.25	3.69	5.50	12.50	14.96	6.25
L-9143-72T	2.44-2.63	1319	118.8	3.25	13.38	5.81	96.8	19.25	12.81	10.50	14.25	7.75	4.00	6.88	13.50	17.31	7.75
L-9144-72T	2.69-2.75	1568	124.3	3.50	14.06	5.81	100.7	21.13	13.38	11.38	16.00	7.63	4.19	6.69	14.50	19.25	8.00
L-9145-72T	2.88-3.00	2056	131.7	3.75	15.25	6.81	101.7	22.00	15.50	12.25	21.62	8.38	4.50	7.00	16.00	20.25	9.25
L-9146-72T	3.13-3.25	2518	137.4	4.00	17.25	7.06	106.0	24.50	17.13	13.00	22.63	8.75	4.75	8.25	18.00	24.00	11.00
L-9147-72T	3.38-3.50	3052	142.2	4.25	18.31	7.31	109.2	36.06	19.31	13.88	23.62	9.38	5.00	8.39	18.00	25.00	11.00
L-9148-72T	3.63-3.75	3495	143.9	4.50	19.38	7.56	110.4	27.13	21.13	14.75	23.69	9.81	5.25	9.38	19.00	25.25	11.63
L-9149-72T	3.88-4.00	4170	148.8	4.75	20.44	7.81	112.8	29.44	22.94	15.72	25.81	10.19	5.50	9.75	20.00	26.50	12.25



**IMPORTANT:** The dimensions shown are for reference only and are subject to change. Please contact your ESCO representative for additional information and pricing.

## Closed 96 Take-Up Assemblies

ASSEMBLY PMID	STRAND DIA.	TOTAL WT. (LBS)	A	DIA. B	C	DIA. D	E	F	G	H	J	K	M	N	P	R	T
L-9131-96T	0.56-0.63	44	109.5	0.75	4.38	1.44	103.4	5.88	3.81	2.50	4.00	2.13	1.13	1.56	3.25	4.50	1.63
L-9132-96T	0.69-0.75	61	111.8	1.00	4.56	1.69	104.8	6.56	4.44	3.30	4.59	2.47	1.44	2.25	3.63	5.00	1.82
L-9133-96T	0.81-0.88	95	114.4	1.13	5.19	2.06	106.1	7.31	5.06	3.76	5.28	2.97	1.56	2.69	4.38	6.00	2.19
L-9134-96T	0.94-1.00	129	117.6	1.25	5.75	2.31	107.6	8.18	5.81	4.13	6.60	3.44	1.69	2.50	5.25	6.62	2.63
L-9135-96T	1.06-1.13	156	118.9	1.38	6.00	2.56	107.4	8.62	6.00	4.50	8.00	3.44	1.81	2.56	5.75	7.50	2.88
L-9136-96T	1.19-1.25	217	120.7	1.63	6.75	2.81	107.3	9.75	6.38	4.88	9.13	4.25	2.06	3.00	6.38	9.00	3.19
L-9137-96T	1.31-1.38	284	123.7	1.75	7.19	3.06	108.7	10.38	6.94	5.38	10.25	4.69	2.38	3.25	7.00	10.00	3.50
L-9138-96T	1.44-1.50	379	125.8	2.00	8.13	3.56	109.9	11.88	7.31	6.50	10.88	5.06	2.56	3.50	8.00	11.00	4.00
L-9139-96T	1.56-1.75	481	127.6	2.25	9.00	3.81	111.2	13.12	8.12	7.20	11.00	5.38	2.81	4.38	9.00	11.50	4.50
L-9140-96T	1.81-2.00	638	130.7	2.50	10.25	4.56	112.0	14.63	8.25	8.00	12.25	6.50	3.06	4.50	10.38	12.50	5.19
L-9141-96T	2.06-2.25	833	134.0	2.75	11.50	4.81	115.2	16.44	10.88	9.00	11.75	7.00	3.31	5.13	12.25	13.25	6.13
L-9142-96T	2.31-2.38	1056	137.2	3.00	12.69	5.06	116.5	18.00	11.81	9.75	13.38	7.25	3.69	5.50	12.50	14.96	6.25
L-9143-96T	2.44-2.63	1403	140.8	3.25	13.38	5.81	118.8	19.25	12.81	10.50	14.25	7.75	4.00	6.88	13.50	17.31	7.75
L-9144-96T	2.69-2.75	1739	144.3	3.50	14.06	5.81	120.7	21.13	13.38	11.38	16.00	7.63	4.19	6.69	14.50	19.25	8.00
L-9145-96T	2.88-3.00	2252	153.7	3.75	15.25	6.81	123.7	22.00	15.50	12.25	21.62	8.38	4.50	7.00	16.00	20.25	9.25
L-9146-96T	3.13-3.25	2647	156.4	4.00	17.25	7.06	125.0	24.50	17.13	13.00	22.63	8.75	4.75	8.25	18.00	24.00	11.00
L-9147-96T	3.38-3.50	3230	162.2	4.25	18.31	7.31	129.2	36.06	19.31	13.88	23.62	9.38	5.00	8.39	18.00	25.00	11.00
L-9148-96T	3.63-3.75	3749	165.9	4.50	19.38	7.56	132.4	27.13	21.13	14.75	23.69	9.81	5.25	9.38	19.00	25.25	11.63
L-9149-96T	3.88-4.00	4476	169.8	4.75	20.44	7.81	133.8	29.44	22.94	15.72	25.81	10.19	5.50	9.75	20.00	26.50	12.25



**IMPORTANT:** The dimensions shown are for reference only and are subject to change. Please contact your ESCO representative for additional information and pricing.