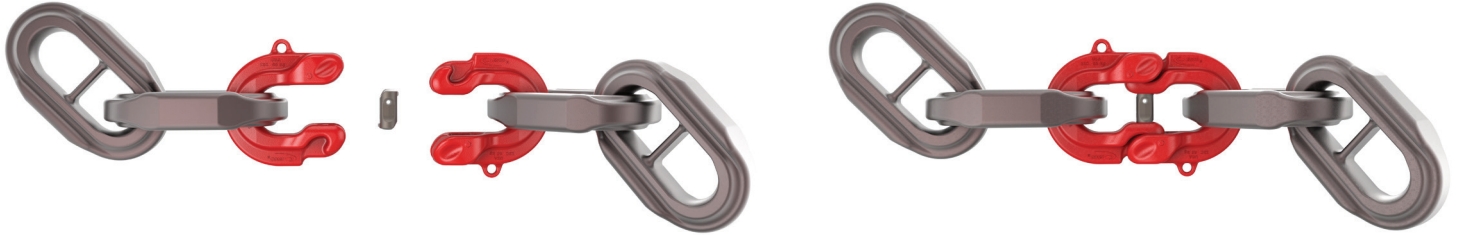


ProLink™

MECHANICAL DRAGLINE CHAIN LINK



Engineered for rapid installation and longer service life

The new ProLink™ mechanical dragline link from ESCO® offers faster, hammerless, and hotwork-free installation and removal - **reducing downtime and increasing safety.**

At 20% lighter than comparable products, customers don't need to sacrifice **payload** for higher performance. Easy rotation and additional wear metal in the bite allow **increased productivity** via **longer duty cycles** leading to **lower total operating costs.**

- Compatible with both hoist and drag chains – in any strand location.
- Quickly rotatable into four different positions for increased wear life.
- Hammerless installation with a pry bar or wrench.
- Available in these sizes: 3", 3.5", 4", 4.5" and 5"

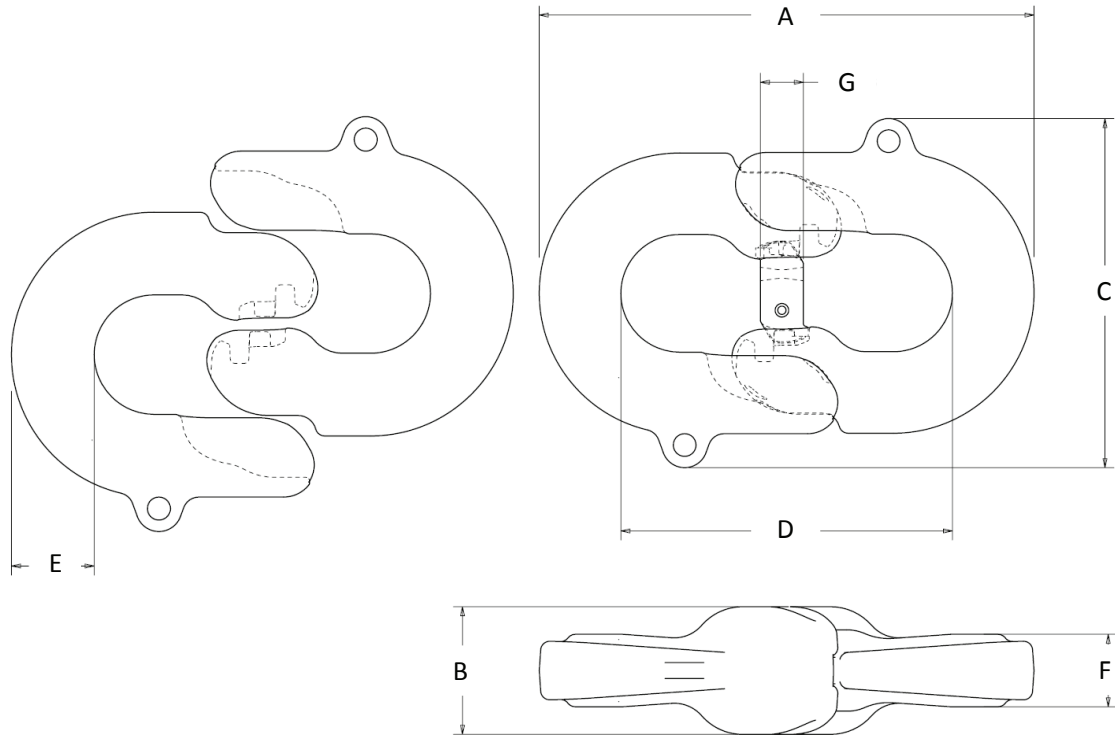


ProLink™ Advantage	Value To Customer
<ul style="list-style-type: none"> • Hammerless and hotwork-free solution 	<ul style="list-style-type: none"> • Meets or exceeds safety standards
<ul style="list-style-type: none"> • More wear metal in the bite 	<ul style="list-style-type: none"> • Up to 20% longer duty cycles
<ul style="list-style-type: none"> • 20% lighter than the Kwik-Wedge link 	<ul style="list-style-type: none"> • Reduced stress on machine • Swing more dirt and less steel
<ul style="list-style-type: none"> • Faster installation and removal, with less “throw-away” material • Rotatable to four different positions to maximize wear life 	<ul style="list-style-type: none"> • Up to 70% less chain maintenance downtime • Up to 30% lower maintenance time and costs

ProLink™

MECHANICAL CHAIN LINKS

For Hoist or Drag Chain Service



ProLink Assembly	Chain Size mm/in	Weight kg/lb	A	B	C	D	E	F	G
			Length mm/in	Height mm/in	Width mm/in	Pitch mm/in	mm/in	mm/in	mm/in
PL300-ASM	76 / 3.00	55 / 122	529 / 20.81	134 / 5.29	391 / 15.38	357 / 14.06	86 / 3.38	76 / 3.00	45 / 1.77
PL350-ASM	89 / 3.50	88 / 195	617 / 24.28	157 / 6.17	439 / 17.29	417 / 16.41	100 / 3.94	89 / 3.50	60 / 2.36
PL400-ASM	102 / 4.00	130 / 287	705 / 27.75	179 / 7.05	488 / 19.25	476 / 18.75	114 / 4.5	102 / 4.00	60 / 2.36
PL450-ASM	114 / 4.50	187 / 413	793 / 31.22	201 / 7.93	538 / 21.19	536 / 21.09	129 / 5.06	114 / 4.50	60 / 2.38
PL500-ASM	127 / 5.00	258 / 567	881 / 34.69	224 / 8.81	587 / 21.13	595 / 23.44	143 / 5.63	127 / 5.00	60 / 2.38